

Report

Cabinet

Part 1

Date: February 2017

Item No:

Subject Key Stage 4 / Key Stage 5 Performance

Purpose To inform Cabinet of verified pupil performance data at Key Stage 4 and Key Stage 5

Author James Harris, Chief Education Officer

Ward All Wards

Summary The following report shows validated Key Stage 4 and 5 pupil performance data across the city of Newport. The Key Stage 4 element of the report shows contextualised data linked to the national core data set, while the Key Stage 5 element shows progress over time and comparisons between regional and national outcomes.

Proposal Cabinet are asked to:

1. To acknowledge the position regarding pupil performance and progress made.
2. To consider any issues arising that the Cabinet may wish to draw to the attention of the Chief Education Officer.

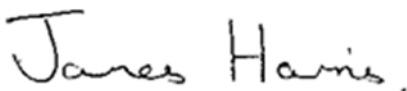
Action by Chief Education Officer

Timetable Immediate

This report was prepared after consultation with:

- The South East Wales Education Achievement Service
- The Cabinet Member for Education & Young People
- Education Services
- The Strategic Director of People

Signed



Background

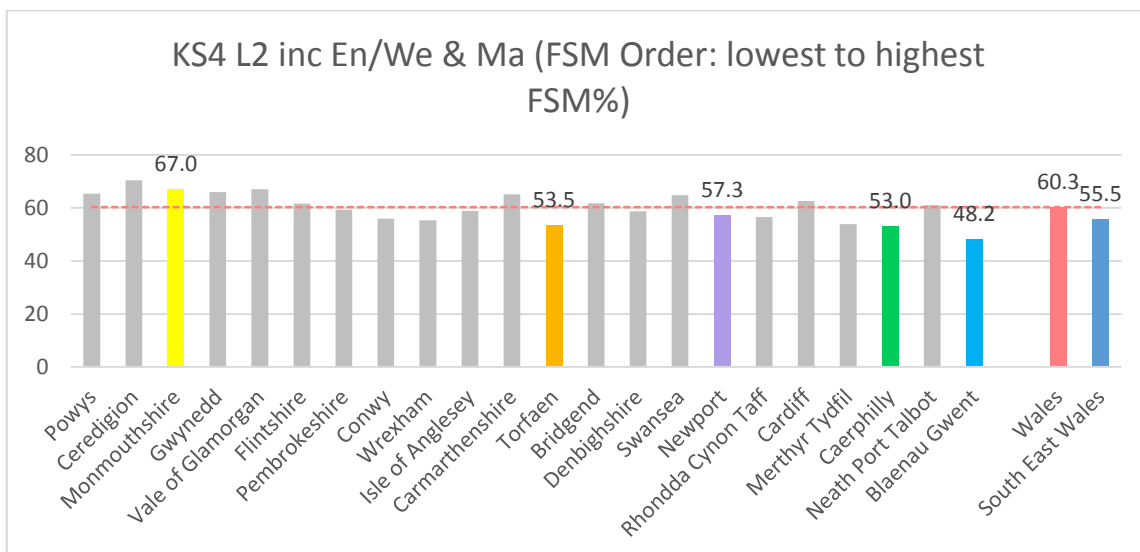
Key Stage 4

At Key Stage 4, the following key performance measures are used to evaluate and compare the full range of achievement within and across local authorities:

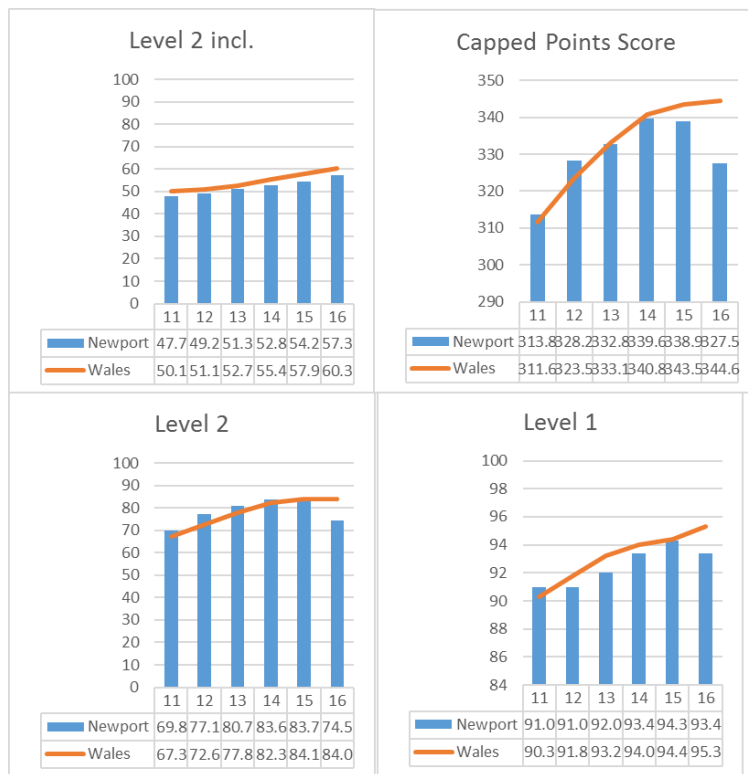
- Level 2 threshold including English or Welsh first language and mathematics (L2+)
- Level 2 threshold (L2)
- Level 1 threshold (L1)
- Core Subject Indicator (CSI)
- Capped Points Score (CPS)
- Level 2 qualification (equivalent to GCSE A*-C) in English or Welsh first language
- Level 2 qualification (equivalent to GCSE A*-C) in mathematics
- Level 2 qualification (equivalent to GCSE A*-C) in science

Of these, the Level 2 threshold including English/Welsh first language and mathematics and the capped point score are particularly important and WG publishes local authority benchmarks based on these each year.

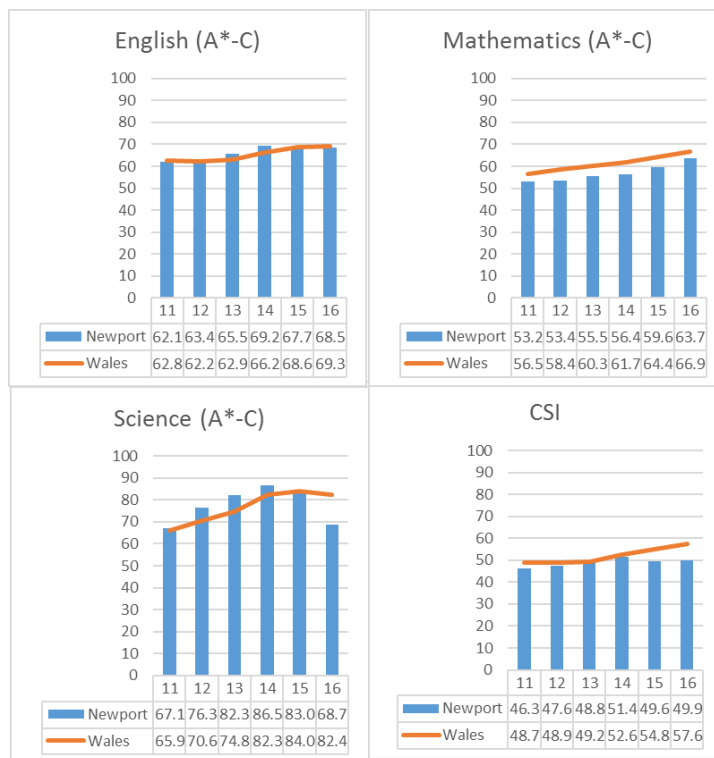
Final 2016 results show improvement across a number of indicators with increases the L2 inc measure and at English and mathematics. The proportion of pupils achieving the Level 2 threshold inclusive of English/Welsh first language and mathematics has improved from 54.2% in 2015 to 57.3% in 2016, an increase of 3.1pp. Newport LA was ranked 15th in 2016, a slight improvement on 16th in 2015. This performance is slightly above expectation (PLASC 2016 FSM rank = 16th).



There were decreases at the L1 & L2 thresholds and Capped Point Score, and all measures remain below the Wales average, reflecting the slightly higher FSM percentage in Newport compared to the national.

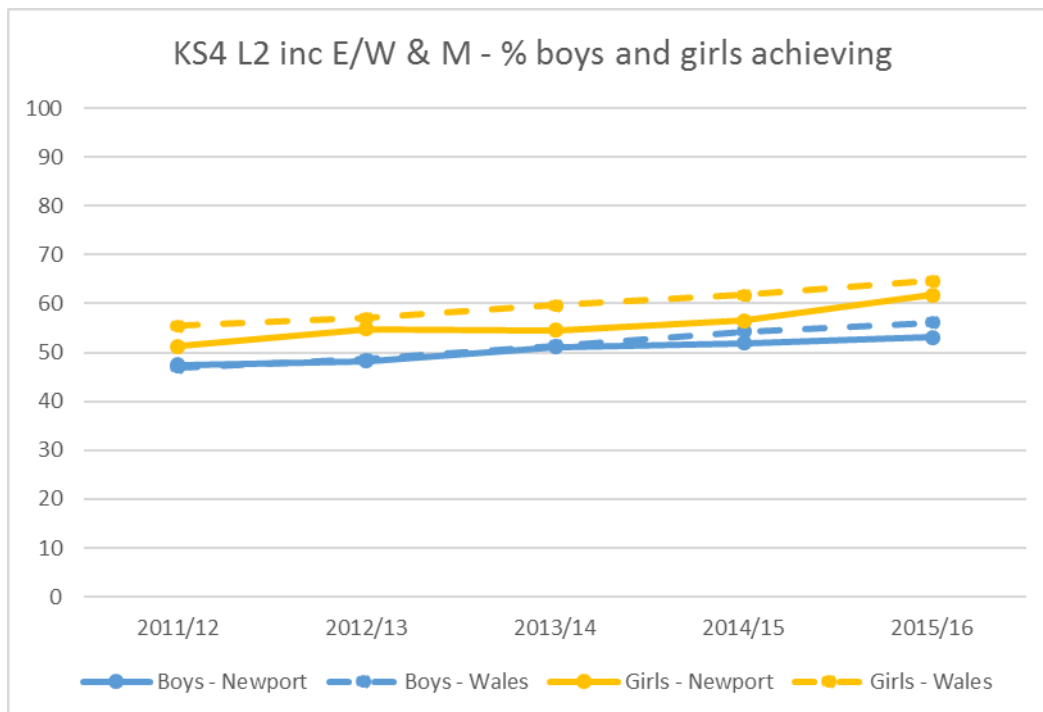


There were increases in English, mathematics and CSI, and despite remaining below the Wales average the gap is narrowing. Performance decreased significantly in science, which has impacted on some of the high level indicators (CSI, L1, L2, Capped Pts).



Gender Differences

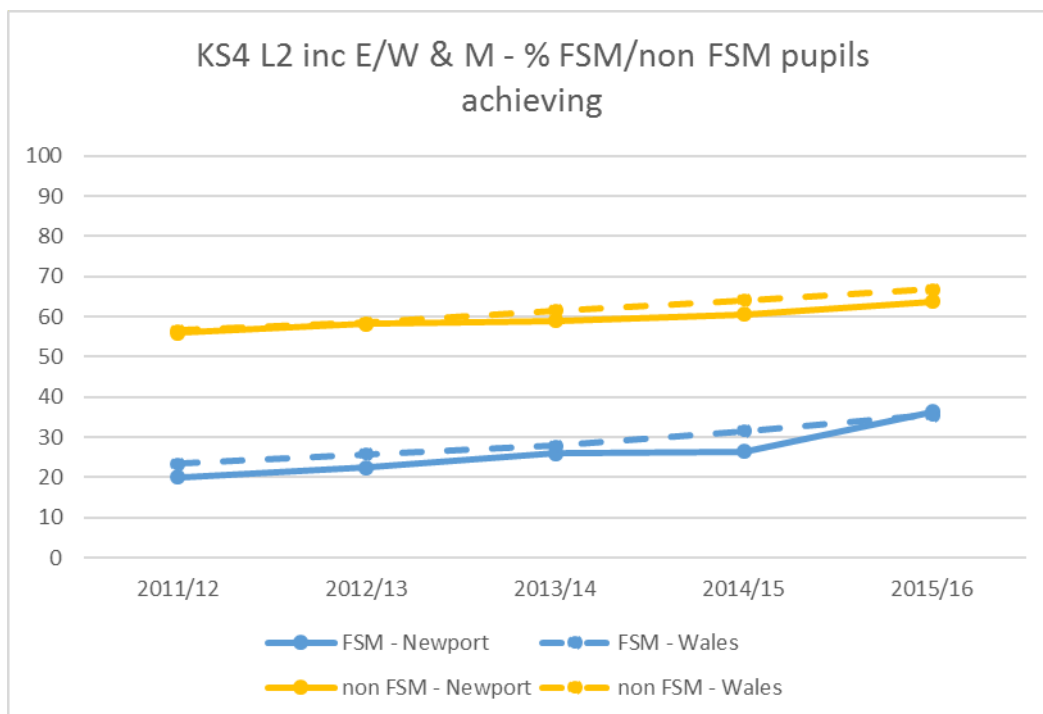
The gender gap in Newport has fluctuated over the past 5 years, and for the Level 2 threshold inclusive of English/Welsh first language and mathematics is now 8.7 percentage points, an increase from 3.9 percentage points in 2012, and is now above the Wales average of 8.6 percentage points. Both boys and girls have improved performance at L2 inc, English and maths since 2015, and girls have improved performance at a faster rate than boys.



KS4 L2 inc E/W & M (% achieving)	2011/12	2012/13	2013/14	2014/15	2015/16
Boys - Newport	47.4	48.3	51.1	51.9	53.1
Boys - Wales	46.9	48.7	51.4	54.3	56.1
Girls - Newport	51.3	54.8	54.5	56.5	61.8
Girls - Wales	55.5	57.0	59.7	61.8	64.7
Difference (boys% - girls%) - Newport	-3.9	-6.5	-3.4	-4.6	-8.7
Difference (boys% - girls%) - Wales	-8.6	-8.3	-8.3	-7.5	-8.6

Performance of eFSM / non-eFSM Pupils

The FSM/non FSM gap narrowed in 2016 for the Level 2 threshold inclusive of English/Welsh first language and mathematics from a 35.9 percentage points gap in 2012 to a 27.5 points gap in 2016, and is now below the Wales average of 31.2 points. This gap has narrowed due to the acceleration of FSM pupil performance relative to non FSM pupil performance.



KS4 L2 inc E/W & M (% achieving)	2011/12	2012/13	2013/14	2014/15	2015/16
FSM - Newport	20.0	22.5	25.9	26.4	36.3
FSM - Wales	23.4	25.8	27.8	31.6	35.6
non FSM - Newport	55.9	58.2	58.9	60.6	63.8
non FSM - Wales	56.6	58.5	61.6	64.1	66.8
Difference (FSM% -non FSM%) - Newport	-35.9	-35.7	-33.0	-34.2	-27.5
Difference (FSM% -non FSM%) - Wales	-33.2	-32.7	-33.8	-32.5	-31.2

LA Rankings

Newport's performance improved for L2 inclusive and Maths, but poor performance in science impacted on the other indicators and L2, L1, CSI, Capped pts, English & Science declined.

	L2 inclusive	L2	L1	CSI	Capped Point Score	English	Maths	Science
2016	15	20	21	21	21	15	15	21
2015	16	12	19	19	18	12	19	17

L2 inc Eng/Wel & Mat		Level 2 Threshold		CSI		Level 1 Threshold		Capped Points Score	
Ceredigion	70.3	Ceredigion	91.4	Ceredigion	69.2	Gwynedd	97.3	Carmarthenshire	360.0
Vale of Glamorgan	67.1	Rhondda Cynon Taff	90.3	Vale of Glamorgan	66.3	Vale of Glamorgan	96.9	Ceredigion	358.5
Monmouthshire	67.0	Monmouthshire	90.2	Monmouthshire	64.7	Rhondda Cynon Taff	96.7	Swansea	356.6
Gwynedd	65.9	Carmarthenshire	89.2	Gwynedd	64.4	Carmarthenshire	96.6	Gwynedd	355.7
Powys	65.3	Neath Port Talbot	89.0	Carmarthenshire	62.3	Isle of Anglesey	96.3	Powys	353.3
Carmarthenshire	65.1	Bridgend	88.0	Swansea	62.2	Ceredigion	96.1	Monmouthshire	353.3
Swansea	64.7	Vale of Glamorgan	87.8	Powys	61.9	Powys	96.1	Vale of Glamorgan	353.1
Cardiff	62.5	Swansea	86.9	Cardiff	60.1	Monmouthshire	95.9	Bridgend	351.6
Bridgend	61.7	Powys	86.6	Bridgend	60.0	Pembrokeshire	95.9	Rhondda Cynon Taff	351.2
Flintshire	61.5	Gwynedd	85.9	Flintshire	58.8	Flintshire	95.9	Neath Port Talbot	349.9
Neath Port Talbot	60.9	Merthyr Tydfil	84.5	Wales	57.6	Bridgend	95.4	Isle of Anglesey	346.8
Wales	60.3	Pembrokeshire	84.5	Pembrokeshire	57.1	Vale of Glamorgan	95.4	Pembrokeshire	346.3
Pembrokeshire	59.3	Cardiff	84.3	Neath Port Talbot	56.8	Flintshire	95.3	Merthyr Tydfil	345.7
Isle of Anglesey	58.8	Wales	84.0	Denbighshire	56.5	Wales	95.3	Wales	344.6
Denbighshire	58.7	Denbighshire	83.6	Isle of Anglesey	55.8	Caerphilly	95.1	Cardiff	343.7
Newport	57.3	Isle of Anglesey	82.8	Rhondda Cynon Taff	55.1	Neath Port Talbot	94.9	Flintshire	343.3
Rhondda Cynon Taff	56.6	Flintshire	82.6	Wrexham	53.9	Torfaen	94.7	Denbighshire	340.4
Conwy	55.9	Conwy	82.1	Conwy	53.1	South East Wales	94.4	Conwy	334.7
South East Wales	55.5	Torfaen	79.9	Merthyr Tydfil	52.3	Cardiff	94.4	South East Wales	330.0
Wrexham	55.3	South East Wales	77.8	South East Wales	51.2	Conwy	94.3	Wrexham	328.6
Merthyr Tydfil	53.9	Caerphilly	76.5	Torfaen	50.7	Wrexham	93.8	Torfaen	328.4
Torfaen	53.5	Newport	74.5	Caerphilly	50.6	Denbighshire	93.7	Caerphilly	327.5
Caerphilly	53.0	Wrexham	73.4	Newport	49.9	Newport	93.4	Newport	327.5
Blaenau Gwent	48.2	Blaenau Gwent	71.4	Blaenau Gwent	40.6	Blaenau Gwent	93.0	Blaenau Gwent	318.1

A*-C English		A*-C Welsh		A*-C mathematics		L2 Science	
Ceredigion	76.6	Pembrokeshire	88.7	Ceredigion	75.4	Vale of Glamorgan	91.3
Monmouthshire	75.5	Bridgend	85.9	Vale of Glamorgan	74.1	Gwynedd	90.8
Powys	75.1	Swansea	82.7	Monmouthshire	72.8	Ceredigion	90.4
Carmarthenshire	74.3	Cardiff	79.8	Swansea	71.7	Bridgend	89.1
Vale of Glamorgan	73.8	Conwy	79.0	Powys	71.5	Merthyr Tydfil	88.3
Cardiff	73.2	Torfaen	78.8	Carmarthenshire	70.7	Rhondda Cynon Taff	85.7
Bridgend	71.6	Vale of Glamorgan	77.3	Gwynedd	70.3	Monmouthshire	85.4
Flintshire	71.5	Isle of Anglesey	77.0	Flintshire	69.5	Carmarthenshire	85.2
Gwynedd	71.4	Wrexham	76.7	Cardiff	67.3	Flintshire	83.9
Swansea	70.2	Wales	75.1	Neath Port Talbot	67.2	Pembrokeshire	83.0
Pembrokeshire	70.0	Gwynedd	74.4	Bridgend	67.2	Torfaen	82.8
Wales	69.3	Rhondda Cynon Taff	74.3	Wales	66.9	Wales	82.4
Neath Port Talbot	69.0	Denbighshire	73.6	Denbighshire	66.7	Wrexham	82.3
Rhondda Cynon Taff	69.0	Ceredigion	73.5	Isle of Anglesey	66.1	Swansea	82.3
Denbighshire	68.5	Carmarthenshire	72.8	Pembrokeshire	65.1	Isle of Anglesey	82.0
Newport	68.5	Neath Port Talbot	68.5	Newport	63.7	Cardiff	81.5
Isle of Anglesey	66.9	Flintshire	68.0	South East Wales	63.6	Caerphilly	81.3
Conwy	66.9	South East Wales	68.0	Conwy	63.6	Powys	81.1
Wrexham	64.7	Powys	65.2	Torfaen	63.0	Denbighshire	80.5
South East Wales	64.2	Caerphilly	61.6	Wrexham	62.8	Neath Port Talbot	78.1
Torfaen	61.6	Monmouthshire	-	Merthyr Tydfil	62.4	South East Wales	76.7
Merthyr Tydfil	61.2	Merthyr Tydfil	-	Caerphilly	62.3	Conwy	76.4
Caerphilly	60.1	Newport	-	Rhondda Cynon Taff	61.6	Newport	68.7
Blaenau Gwent	56.4	Blaenau Gwent	-	Blaenau Gwent	57.4	Blaenau Gwent	62.8

Individual Schools

Improvement across Newport masks variation between schools and indicators. Performance in Bassaleg improved in all indicators and subjects except for Capped Points, similarly Lliswerry High improved in all areas other than L2 threshold. Llanwern High's performance is lower in all areas than 2015. The table below presents the individual schools' data in order of Free School Meal eligibility (lowest to highest).

School	FSM	% L2 E,W+M			% L2			% L1			% CSI			Capped Points		
		2014	2015	2016	2014	2015	2016	2014	2015	2016	2014	2015	2016	2014	2015	2016
Caerleon	5.8	72.4	67.9	68.5	85.6	81.9	83.8	98.8	98.3	97.9	68.8	65.8	67.6	368.3	361.4	364.3
Bassaleg	6.8	69.1	65.6	73.1	96.0	92.1	93.0	99.3	98.8	99.2	68.8	65.2	72.7	381.5	377.2	371.7
St Joseph's	13.2	52.3	73.0	73.0	89.5	92.6	81.0	97.5	100.0	98.7	51.9	67.0	57.5	352.0	362.6	352.5
St Julian's	18.4	50.7	46.6	51.0	80.1	78.5	59.4	91.1	90.4	96.4	48.6	41.0	40.6	331.0	315.4	298.2
Newport High	20.6	37.2	43.5	44.8	88.4	83.7	67.2	94.8	93.5	95.3	36.0	33.2	32.8	337.8	325.3	318.6
Lliswerry High	29.2	40.2	41.3	53.7	73.9	84.5	77.4	88.0	91.0	94.9	38.6	38.7	52.0	315.9	331.4	342.3
Duffryn High	30.5	43.3	41.2	52.1	77.3	80.7	79.3	90.6	95.7	96.3	41.9	31.6	49.5	310.2	328.0	330.6
Llanwern High	35.2	40.8	45.7	44.5	73.6	81.9	69.3	85.6	93.1	85.4	40.8	44.8	22.6	297.2	317.6	288.4
Newport	19.4	52.8	54.2	57.3	83.6	83.7	67.2	93.4	94.3	93.4	51.4	49.6	49.9	339.6	338.9	327.5
Wales	18.8	55.4	57.9	60.3	82.3	84.1	84.0	94.0	94.4	95.3	52.6	54.8	57.6	340.8	343.5	344.6
School	FSM	English (A*-C)			Maths (A*-C)			% L2 Science								
		2014	2015	2016	2014	2015	2016	2014	2015	2016						
Caerleon	5.8	81.6	79.7	75.5	76.0	76.4	81.7	84.0	83.5	86.7						
Bassaleg	6.8	85.7	74.7	78.5	71.1	70.4	81.0	95.7	96.8	97.1						
St Joseph's	13.2	85.8	82.2	81.4	52.3	76.1	80.5	96.7	90.4	72.6						
St Julian's	18.4	66.8	64.9	68.3	54.8	51.0	57.4	90.8	84.5	49.4						
Newport High	20.6	47.1	56.0	58.9	41.9	52.2	50.0	74.4	63.6	44.3						
Lliswerry High	29.2	53.3	60.0	71.8	47.3	44.5	55.4	77.2	89.0	89.3						
Duffryn High	30.5	56.2	54.0	60.6	47.8	48.1	56.4	77.3	67.4	85.6						
Llanwern High	35.2	60.8	68.1	61.3	46.4	49.1	47.4	92.8	95.7	23.4						
Newport	19.4	69.2	67.7	68.5	56.4	59.6	63.7	86.5	83.0	68.7						
Wales	18.8	66.2	68.6	69.3	61.7	64.4	66.9	82.3	84.0	82.4						

Free School Meal Benchmark Summary

When FSM benchmark data is used to compare the performance of similar schools, the number of Newport schools above the median has increased for the Level 2 inclusive, mathematics and science measures. It has reduced for the Level 2, Level 1, Capped points and English. The number of schools in the bottom quarter has increased for L2, L1, CSI Capped points and Science.



Individual school benchmark performance is presented in Appendix A.

Welsh Government Modelled Expectation

The gap between the LA benchmarks for performance modelled on FSM entitlement and actual performance narrowed slightly in 2016, with the Level 2 threshold including English/Welsh and mathematics 1 percentage point below the expected achievement compared to 1.3pp in 2015. For capped point score Newport widened the gap to 15 percentage points below the expected achievement.

		2012	2013	2014	2015	2016
Level 2 threshold including English/Welsh and maths	Actual	50	52	53.2	54.9	58.9
	Target	49	51	53.6	56.2	59.9
	Difference	1	1	-0.4	-1.3	-1.0
Capped Average Wider Point Score 2011-13	Actual	331	339	342.0	342.9	336.2
	Target	323	336	345.4	348.8	351.2
	Difference	8	3	-3.4	-5.9	-15.0

LA – Key Stage 5 (Newport LA Schools only)

Performance Data – A Level Only

The analysis below uses calculated figures, which are not all shown in the tables.

	A Level (A2)								
	Total number of A Level (A2) Entries		Percentage of A Levels (A2) qualifications achieved (A*-E)			Percentage of A Levels (A2) AT Grade A/A*			
	2015	2016	2015	2016	Difference	2015	2016	Difference	
Newport	1,583	1,738	99.2	96.9	▼ -2.3	22.6	20.1	▼ -2.5	
South East Wales	4,255	4,364	99.3	97.2	▼ -2.2	19.4	20.4	▲ 1.1	
Wales	26,392	23,871	99	99	▼ 0.0	23	22	▼ -1.0	

Cohort size 2015 = 843, Cohort size 2016 = 859

A*-E

- The percentage of A levels at A*-E has fallen from 99.2% to 96.9%.
- Newport pupils achieved 1,684 A-Levels at A*-E in 2016, 113 more than in 2015.
- The cohort has increased slightly, and the number of A levels at A*-E awarded per student rose marginally from 1.9 in 2015 to 2.0 in 2016.

A*-A

- The percentage of A levels at A*-A decreased from 22.6% in 2015 to 20.1% in 2016.
- Newport pupils achieved 349 A-Levels at A*-A in 2016, 8 less than in 2015.
- The number of A levels at A*-A awarded per student remained at 0.4 in 2016

In 2015 there were only 12 A-Level entries which were graded as fail, but in 2016 this increased to 54. This may suggest that some schools entered a small number of pupils for one or more A Levels, where an alternative vocational qualification may have been more appropriate.

Performance Data – Level 3 Threshold (includes A Level / Vocational Qualifications)

Level 3 Threshold

	Total number		Percentage of students entering			Percentage of students achieving		
	2015	2016	2015	2016	Difference	2015	2016	Difference
Newport	750	791	89.0	92.1	▲ 3.1	92.3	97.7	▲ 5.4
South East Wales	2,098	2,038	89.4	90.5	▲ 1.1	95.6	97.9	▲ 2.3
Wales	11,838	10,804	87.9	89.5	▲ 1.7	97.0	98.0	▲ 1.0

- When vocational qualifications are taken into account and the Welsh Government's main indicator of post-16 performance, the Level 3 threshold is considered, performance increased from 92.3% to 97.7%.
- This increase of 5.4pp compares well with the 2.3pp increase across the EAS region, and 1.0pp nationally.

Appendix A – Key Stage 4, School Benchmark Quarter Performance

Subject, AOL or Key Indicator	School Name	2013/14		2014/15		2015/16	
		% Pupils Achieving	Quarter	% Pupils Achieving	Quarter	% Pupils Achieving	Quarter
Level 2 threshold including English/Welsh and Maths	Bassaleg School	69.1	3	65.6	3	73.1	2
	Caerleon Comprehensive School	72.4	2	67.9	3	68.5	3
	Duffryn High School	43.3	2	41.2	3	52.1	2
	Llanwrn High School	40.8	2	45.7	1	44.5	3
	Llswerry High School	40.2	2	41.3	2	53.7	1
	Newport High School	37.2	4	43.5	4	44.8	4
	St Julian'S School	50.7	2	46.6	4	51.0	3
	St. Joseph'S R.C. High School	52.3	3	73.0	1	73.0	1
Level 2 threshold	Bassaleg School	96.0	1	92.1	2	93.0	2
	Caerleon Comprehensive School	85.6	3	81.9	4	83.8	3
	Duffryn High School	77.3	2	80.7	2	79.3	3
	Llanwrn High School	73.6	3	81.9	2	69.3	3
	Llswerry High School	73.9	3	84.5	2	77.4	3
	Newport High School	88.4	2	83.7	2	67.2	4
	St Julian'S School	80.1	3	78.5	3	59.4	4
	St. Joseph'S R.C. High School	89.5	2	92.6	2	81.0	4
Level 1 threshold	Bassaleg School	99.3	2	98.8	3	99.2	3
	Caerleon Comprehensive School	98.8	3	98.3	3	97.9	4
	Duffryn High School	90.6	3	95.7	2	96.3	3
	Llanwrn High School	85.6	4	93.1	3	85.4	4
	Llswerry High School	88.0	4	91.0	3	94.9	3
	Newport High School	94.8	3	93.5	4	95.3	4
	St Julian'S School	91.1	4	90.4	4	96.4	4
	St. Joseph'S R.C. High School	97.5	3	100.0	1	98.7	3
Core Subject Indicator	Bassaleg School	68.8	2	65.2	3	72.7	2
	Caerleon Comprehensive School	68.8	2	65.8	3	67.6	3
	Duffryn High School	41.9	2	31.6	3	49.5	2
	Llanwrn High School	40.8	2	44.8	1	22.6	4
	Llswerry High School	38.6	2	38.7	2	52.0	1
	Newport High School	36.0	4	33.2	4	32.8	4
	St Julian'S School	48.6	2	41.0	4	40.6	4
	St. Joseph'S R.C. High School	51.9	3	67.0	1	57.5	4
Capped Points Score	Bassaleg School	381.5	1	377.2	1	371.7	2
	Caerleon Comprehensive School	368.3	2	361.5	3	364.3	3
	Duffryn High School	310.2	3	328.0	2	330.6	3
	Llanwrn High School	297.2	4	317.6	3	288.4	4
	Llswerry High School	315.9	3	331.4	2	342.3	2
	Newport High School	337.8	3	325.2	4	318.6	4
	St Julian'S School	331.0	3	315.4	4	298.2	4
	St. Joseph'S R.C. High School	352.0	3	362.6	2	352.5	4

Subject, AOL or Key Indicator	School Name	2013/14		2014/15		2015/16	
		% Pupils Achieving	Quarter	% Pupils Achieving	Quarter	% Pupils Achieving	Quarter
English	Bassaleg School	85.7	1	74.7	4	78.5	3
	Caerleon Comprehensive School	81.6	2	79.7	2	75.5	4
	Duffryn High School	56.2	2	54.0	2	60.6	2
	Llanwern High School	60.8	1	68.1	1	61.3	2
	Lliswerry High School	53.3	2	60.0	2	71.8	1
	Newport High School	47.1	4	56.0	4	58.9	3
	St Julian'S School	66.8	1	64.9	2	68.3	2
St. Joseph'S R.C. High School	85.8	1	82.2	1	81.4	1	
Mathematics	Bassaleg School	71.1	4	70.4	3	81.0	2
	Caerleon Comprehensive School	76.0	2	76.4	2	81.7	2
	Duffryn High School	47.8	2	48.1	2	56.4	2
	Llanwern High School	46.4	2	49.1	2	47.4	4
	Lliswerry High School	47.3	2	44.5	3	55.4	2
	Newport High School	41.9	4	52.2	4	50.0	4
	St Julian'S School	54.8	3	51.0	4	57.4	3
St. Joseph'S R.C. High School	52.3	4	76.1	1	80.5	1	
Science	Bassaleg School	95.7	1	96.8	1	97.1	1
	Caerleon Comprehensive School	84.0	3	83.5	3	85.6	2
	Duffryn High School	77.3	3	67.4	3	85.6	2
	Llanwern High School	92.8	1	95.7	1	23.4	4
	Lliswerry High School	77.2	3	89.0	2	89.3	1
	Newport High School	74.4	4	63.6	4	44.3	4
	St Julian'S School	90.8	2	84.5	3	49.4	4
St. Joseph'S R.C. High School	96.7	1	90.4	3	72.6	4	

Financial Summary

There are no financial implications to this report

Risks

Risk	Impact of Risk if it occurs* (H/M/L)	Probability of risk occurring (H/M/L)	What is the Council doing or what has it done to avoid the risk or reduce its effect	Who is responsible for dealing with the risk?
The LA does not make expected future progress in KS4 and 5 Key Performance Indicators	M	M	<ul style="list-style-type: none"> Target setting arrangements with individual schools are challenged before approval and sign off. The LA and EAS considered 'progress towards targets' information during the academic year to determine if schools are on track to achieve. Brokerage, Intervention and Support is provided by the EAS / LA where a school is not making the necessary progress. The EAS are providing specific support to implement new specifications for GCSE Science, Maths, Numeracy and English Language qualification. 	South East Wales Education Achievement Service , Deputy Chief Education Officer and Chief Education Officer
Individual schools do not make expected future progress in KS4 and 5 Performance Indicators	M	M	<ul style="list-style-type: none"> Target setting procedures are approved by Challenge Advisers and the Principal Challenge Adviser. 'Progress towards targets' (at 3 intervals during the academic year) are reported to the EAS. A full analysis of pupil outcomes and next steps is drawn up by the schools to ensure that processes and procedures improve from the previous data 	Head Teachers, Chairs of Governors, Challenge Advisors.

			set. This is scrutinised by the EAS and LA <ul style="list-style-type: none"> • Each school is engaged in essential preparation for new the implementation of GCSE specifications 	
--	--	--	--	--

* Taking account of proposed mitigation measures

Links to Council Policies and Priorities

This report links to:

The Education Service Plan
 The EAS Business Plan 2014/15
 Newport City Council Improvement Plan 15/16

Options Available and considered

For Cabinet to note the report and make comments.

Preferred Option and Why

N/A

Comments of Chief Financial Officer

There are no financial implications linked to this report

Comments of Monitoring Officer

There are no legal issues arising from the Report.

Staffing Implications:

There are no staffing implications linked to this report

Comments of Cabinet Member

The Cabinet Member has approved the report for consideration by cabinet.

Local issues

Scrutiny Committees

This report will be presented to Scrutiny Committee on Marc 22nd 2017.

Equalities Impact Assessment and the Equalities Act 2010

This report does not require an Equalities Impact Assessment.

Children and Families (Wales) Measure

This report did not require any consultation with children and young people.

Wellbeing of Future Generations (Wales) Act 2015

All local authorities have a duty to strive to develop a “Prosperous Wales” by developing “skilled and well-educated population in an economy which generates wealth and provides employment opportunities.” The National Categorisation system develops schools to be the best they can be, supporting the best possible outcomes for children and young people. All schools will be challenged and supported to improve pupil attainment with a view to create “more equal wales” that enables pupils to fulfil their potential no matter what their background or circumstances.

Crime and Disorder Act 1998:

N/A

Consultation

This report did not require wider consultation

Background Papers

There are no background papers to this report.

Dated: 31/01/2017